



# CURRICULUM INFORMATION

## Summer 2025

### YEAR 3

RE



#### Pentecost (Energy)

- Understand that Christians believe the gift of the Holy Spirit within them gives them energy and the power to live the way of Jesus.

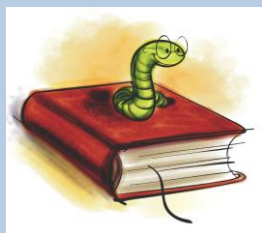
#### Reconciliation (Choices)

- Explore the importance of examining your conscience when making a good choice and to minimise bad effects for ourselves and others.

#### Universal Church (Special places)

- Understand that the Christian community has many special places; places for worship & prayer; pilgrimage and holy places associated with Jesus & other people.

### English



Poetry writing  
Narrative writing

#### Grammar focus:

- Extend the range of sentences with more than one clause by using a wider range of conjunctions, including when, if, because, although.
- Use the present perfect form of verbs in contrast to the past tense.
- Choose nouns or pronouns appropriately for clarity and cohesion and to avoid repetition.
- Use conjunctions, adverbs and prepositions to express time and cause.
- Use fronted adverbials.
- Use commas after fronted adverbials.
- Indicate possession by using the possessive apostrophe with plural nouns.
- Use and punctuate direct speech.

#### Class book:

The Firemaker's Daughter  
by Philip Pullman

#### Key texts:

Poetry: Love that dog.  
Narrative: The Iron Man

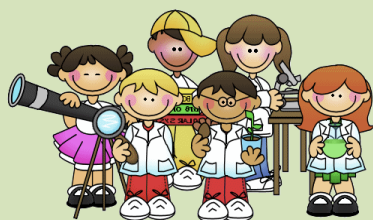
### Maths



- Multiplication - 3,4 &8
- Division – 1,2,3,4,5 and 8 times tables
- Multiplication and division- worded problems
- Fractions - finding fractions of discrete and continuous quantities
- Ordering and comparing fractions
- Adding and subtraction fractions
- Multiplication- formal written Multiplication
- Division – long division
- Time

TT Rock Stars

### Science



#### Animals including humans

- Identify that animals including humans need the right types and amount of nutrition, and that they cannot make their own food; they get nutrition from what they eat
- Identify that humans and some other animals have skeletons and muscles for support, protection and movement

#### Plants

- Identify and describe the functions of different parts of a flowering plant.
- Explore the requirements of plant life and growth.
- Investigate the way in which water is transported within plants.
- Explore the part that flowers play in the lifecycle of flowering plants including pollination, seed formation and seed dispersal.

### History







#### What did the ancient Egyptians believe?

- Describe the physical features of Egypt including the importance of the river Nile.
- Investigate the Egyptian creation story.
- Identify the characteristics of important gods and goddesses
- Explain why the pyramids were built and identify the stages and challenges of building them,
- Explain some Egyptian beliefs about the afterlife.

### Music

- Improve singing technique and confidence in performing rounds etc.
- Perform melodies from colour- or staff notation.
- Improve Recorder skills – learn songs which contain the note C.
- Improve ukulele strumming technique.
- Improve finger placing for F and C major chords.
- Perform melodies on ukulele open strings and some fingered notes.
- Use voices and body percussion to compose atmospheric soundscapes.
- Analyse structure, rhythm and pitches from melodies and identify aurally.
- Aurally identify the notes for a 2-note melody (using chime bars) and notate it on a simplified staff. CHOOSE SONG!
- Understand and write musical notation more accurately.
- Compose and notate a short melodic phrase.
- Begin experimenting with harmony (two chime bars played simultaneously in 3rds etc).
- Contribute lyrics to a class song composition.
- Compose music for a mythical creature.

Computing	Geography	PSHE - Jigsaw
 <p><b>Branching databases</b></p> <ul style="list-style-type: none"> <li>Investigate databases.</li> <li>Complete a branching database.</li> <li>Create a branching database on the computer.</li> </ul> <p><b>Simulations</b></p> <ul style="list-style-type: none"> <li>Investigating simulations and their purpose.</li> <li>Exploring simulations.</li> <li>Analysing &amp; evaluating simulations.</li> </ul> <p><b>Graphing</b></p> <ul style="list-style-type: none"> <li>Using 2Graph, enter data for a graph with given number of fields.</li> <li>Using 2Graph, solve a Maths question and present results in a range of graphic formats.</li> </ul>	 <p><b>Are all settlements the same?</b></p> <ul style="list-style-type: none"> <li>Explore different types of settlements and land uses.</li> <li>Understand the difference between urban and rural.</li> <li>Describe the different human and physical features in their local area.</li> <li>Make land use comparisons with New Delhi.</li> </ul>	<ul style="list-style-type: none"> <li>Relationships.</li> <li>Changing Me.</li> </ul> <p style="text-align: center;"><b>RSE</b></p> <ul style="list-style-type: none"> <li>Sharing online.</li> <li>Chatting online.</li> <li>Safe in my body.</li> <li>Drugs, alcohol, tobacco</li> <li>First aid heroes</li> <li>A community of love</li> <li>What is the church?</li> <li>How do I love others?</li> </ul>
Creative – Art/D&T	Spanish	PE
 <p><b>Art</b></p> <ul style="list-style-type: none"> <li>Drawing: growing artists Using botanical drawings and scientific plant studies as inspiration, pupils explore the techniques of artists such as Georgia O’Keefe and Maud Purdy to draw natural forms, becoming aware of differences in the choice of drawing medium, scale and the way tonal shading can help create form.</li> </ul> <p><b>D&amp;T</b></p> <ul style="list-style-type: none"> <li>Cooking and Nutrition – investigating seasonal foods and creating a seasonal food tart.</li> </ul>	 <p><b>Los helados (Ice creams)</b></p> <ul style="list-style-type: none"> <li>In this unit the pupils will learn: ten flavours of ice-cream and the transactional language required to purchase an ice-cream in Spanish.</li> </ul> <p><b>Se (I know how)</b></p> <ul style="list-style-type: none"> <li>In this unit, pupils will learn about: 10 familiar activities that they know how or do not know how to do in Spanish.</li> </ul>	<p><b>Summer 1</b></p> <ul style="list-style-type: none"> <li>Swimming</li> <li>Gymnastics</li> </ul> <p><b>Summer 2</b></p> <ul style="list-style-type: none"> <li>Swimming</li> <li>Yoga</li> </ul>

Homework – weekly Thursday to Tuesday – including Spellings and Reading.